

pGL4.70 [*hRluc*] Vector Features and Circle Map

The following features are present in the vector based on nucleotide sequence.

Multiple cloning region	1–70
<i>hRluc</i> reporter gene	100–1035
SV40 late poly(A) signal	1067–1288
Reporter Vector primer 4 binding region	1356–1375
<i>Co/EI</i> -derived plasmid replication origin	1613
Synthetic β -lactamase (<i>Amp^r</i>) coding region	2404–3264
Synthetic poly(A) signal/transcriptional pause site	3369–3522
Reporter Vector primer 3 binding region	3471–3490

Note: Maps of all the pGL4 Vectors are available at: www.promega.com/vectors/

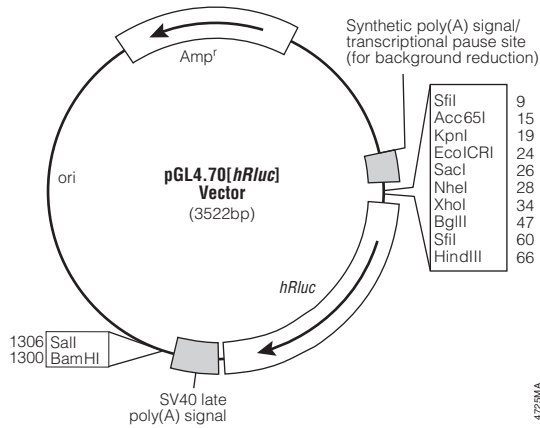


Figure 1. pGL4.70 [*hRluc*] Vector circle map and sequence reference points.

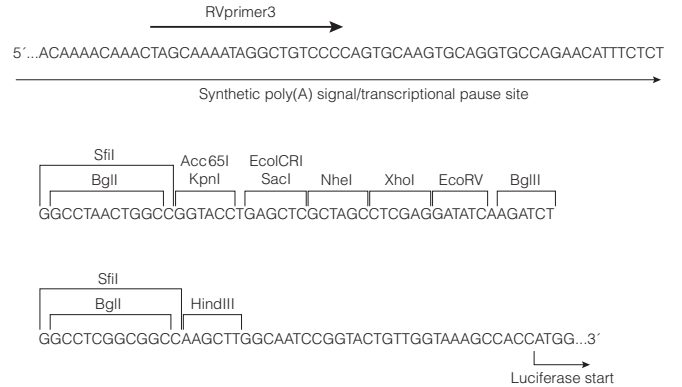


Figure 2. pGL4.70 [*hRluc*] Vector multiple cloning region.